

# HÖRMANN Industrie-Sectionaltore

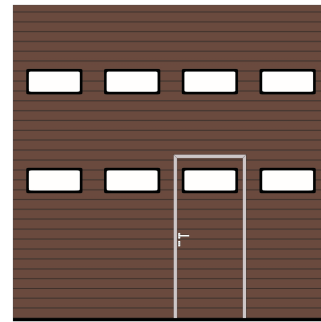
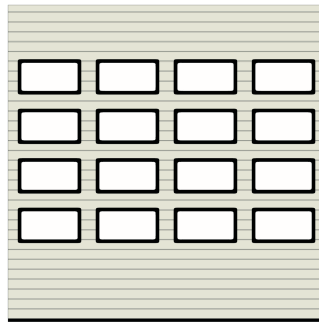
Beispiele für Torblattausführungen

**MIELKE & ERICHSEN**  
**TORTECHNIK**

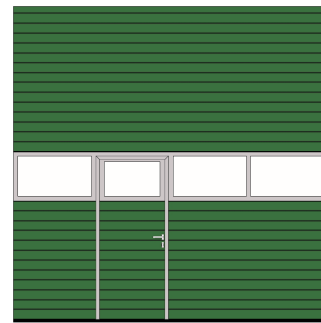
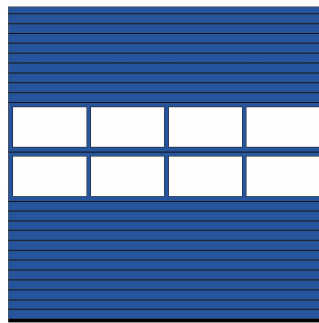
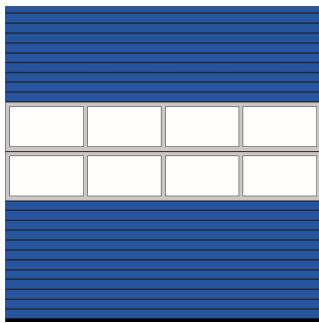
Tangstedter Chaussee 30  
25462 Rellingen  
Tel.: 04101 696789-0  
Fax.: 04101 696789-5



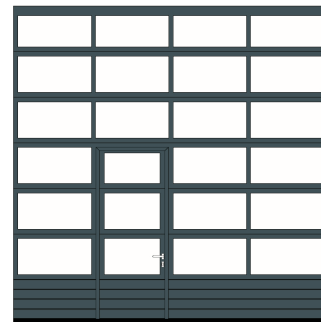
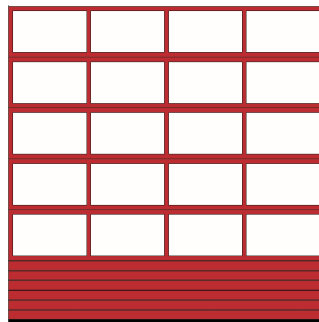
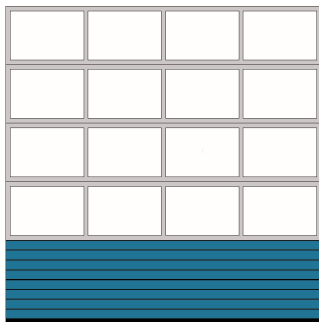
Tortyp SPU



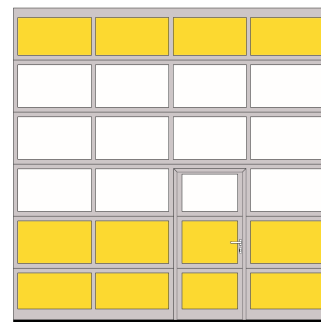
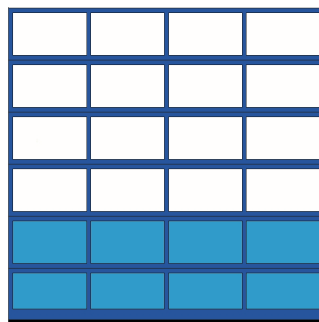
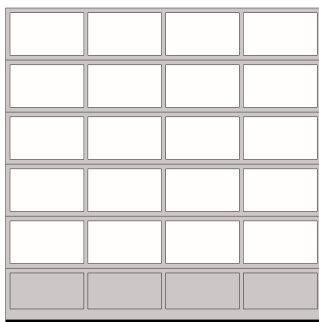
Tortyp SPU



Tortyp APU/TAP



Tortyp ALR/TAR



Alle Torblattbeispiele zeigen ein Tor 4 x 4 m  
Farbdarstellung kann aus drucktechnischen Gründen vom Original abweichen